

Dediware Software User Manual For Winbond SPI NOR Flash Option Bytes

Version 1.0



Table of Content:

I.	Description	3
II.	Read Register Value.....	3
III.	Option Bytes Setting.....	4
IV.	Revision History.....	6

Important notice:

This document is provided as a guideline and must not be disclosed without consent of DediProg. However, no responsibility is assumed for errors that might appear.



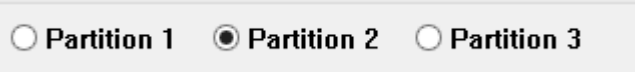
DediProg reserves the right to make any changes to the product and/or the specification at any time without notice. No part of this document may be copied or reproduced in any form or by any means without prior written consent of DediProg.

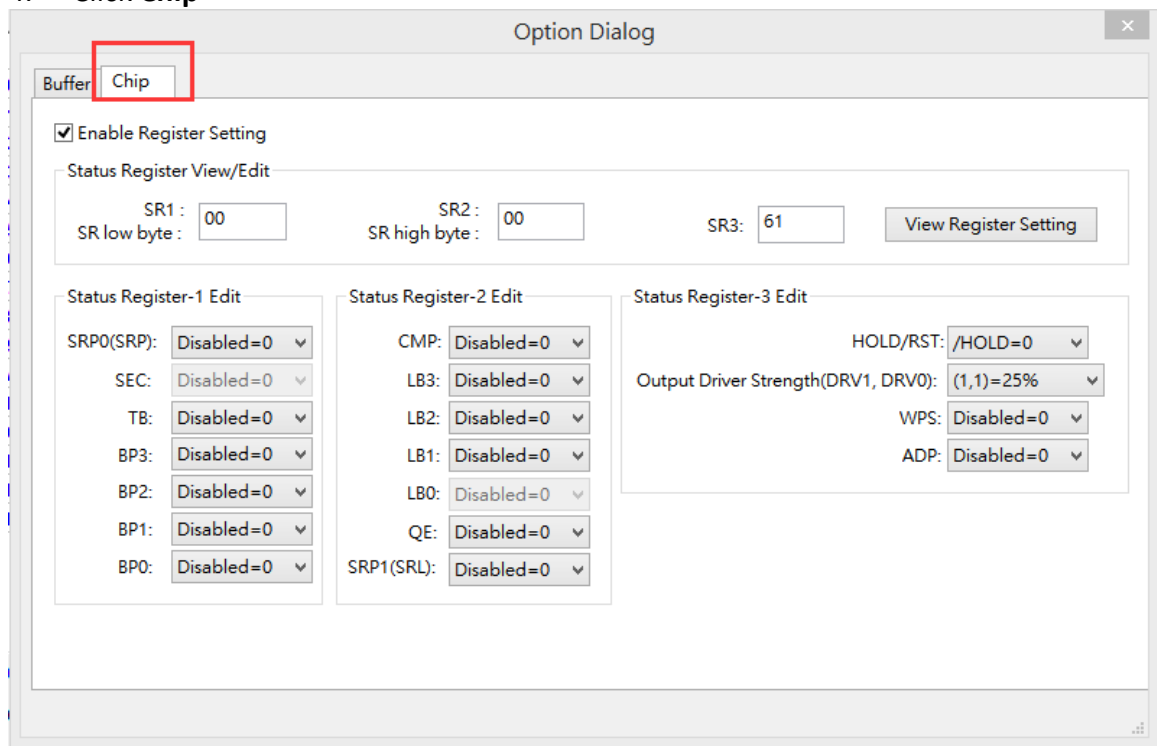
I. Description

This application note illustrates how set up Dediware for programming the Winbond SPI NOR Flash option bytes. Learn more information about DediProg products and how to use them.

II. Read Register Value

Read IC register value according to the following steps

1. Click **Select**  → Select Chip
2. Click **Read IC** 
3. Click **Partition 2** 
4. Click **Chip**

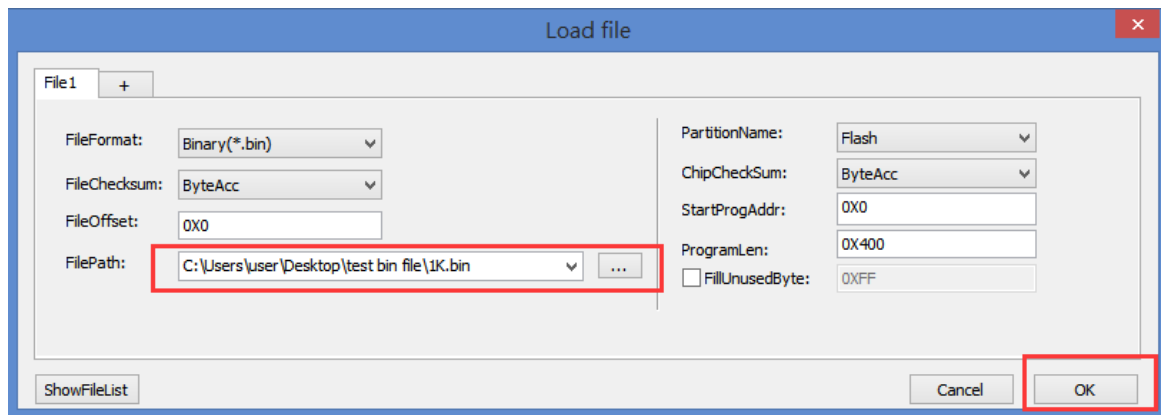


III. Option Bytes Setting

Please load the file before programming the register.

1. Click **Load** 

2. Load the project file→OK



3. Click **Config** 

4. Click **SPI NOR** 

● **Status Register1, 2, 3**

1. Enter the SR1(hex), SR2(hex), SR3(hex) value→**View Register Setting**, or select the status for each Bit in Status Register

Status Register View/Edit

SR1 : SR2 : SR3:

SR low byte: SR high byte:

Status Register-1 Edit	Status Register-2 Edit	Status Register-3 Edit
SRP0(SRP): <input type="button" value="Disabled=0"/>	CMP: <input type="button" value="Disabled=0"/>	HOLD/RST: <input type="button" value="/HOLD=0"/>
SEC: <input type="button" value="Disabled=0"/>	LB3: <input type="button" value="Disabled=0"/>	Output Driver Strength(DRV1, DRV0): <input type="button" value="(1,1)=25%"/>
TB: <input type="button" value="Disabled=0"/>	LB2: <input type="button" value="Disabled=0"/>	WPS: <input type="button" value="Disabled=0"/>
BP3: <input type="button" value="Disabled=0"/>	LB1: <input type="button" value="Disabled=0"/>	ADP: <input type="button" value="Disabled=0"/>
BP2: <input type="button" value="Disabled=0"/>	LB0: <input type="button" value="Disabled=0"/>	
BP1: <input type="button" value="Disabled=0"/>	QE: <input type="button" value="Disabled=0"/>	
BP0: <input type="button" value="Disabled=0"/>	SRP1(SRL): <input type="button" value="Disabled=0"/>	

2. Click **OK** to save values 

3. Program  →Config

Note: Program Flash or Erase Flash will erase Status Register 1 to 00h

IV. Revision History

Date	Version	Changes
10/14/2016	1.0	Initial release

DediProg Technology Co., Ltd

- **Taiwan Headquarter** TEL: 886-2-2790-7932 FAX: 886-2-2790-7916
4F., No.7, Ln. 143, Xinming Rd., Neihu Dist., Taipei City 114, Taiwan
- **Shanghai Office** TEL: 86-21-5160-0157 FAX: 86-21-6126-3530
Room 503, Block E, No.1618, Yishan Road, Shanghai, China
- **U.S. Office** TEL: +1 480-775-5139
2266 South Dobson Road, Suite 200, Mesa, AZ, 85202, USA

Technical Support : support@dediprogram.com

Sales Support : sales@dediprogram.com

www.dediprogram.com

Information furnished is believed to be accurate and reliable. However, DediProg assumes no responsibility for the consequences of use of such information or for any infringement of patents or other rights of third parties which may result from its use. Specifications mentioned in this publication are subject to change without notice.

This publication supersedes and replaces all information previously supplied.

All rights reserved
Printed in Taiwan.