

# SF700

SPI Flash Programmer

[www.dediprogram.com](http://www.dediprogram.com)



SF700 is a all-new designed SPI Flash engineering programmer, which supports all SPI NOR Flash and SPI NAND Flash in the market.

SF700 continues to provide strong engineering mode and command line as SF600, DediProg's another programmer, to satisfy the demand for R&D. Apart from the engineering application, SF700 also supports projectfile for small volume production demand. SF700 can do programming in parallel with multiple programmers or Standalone mode.

## Features

### High speed programming

Built in high speed processor to achieve high programming speed.

IC Type	IC P/N	Data Size	P+V Time (sec)	
			Engineering mode	Production mode
SPI Octal NOR	MT35XU01GBBA1	128MB	141	138
	MX66UM1G45G	128MB	148	146
SPI NAND	GD5F1GQ4UC	64KB	61	62

SPI CLK setting: 25MHz.

IO Mode: SPI Octal NOR in octal. mode and SPI NAND in quad mode.

### Support IC types

SPI Octal. NOR Flash, SPI NOR Flash, and SPI NAND Flash.

### Support a variety of file formats

Binary, Intel Hex, Motorola S19, and ROM, etc.

### Support Command Line

Provide Command line for software redevelopment.

### Support Standalone mode

IC programming without PC.

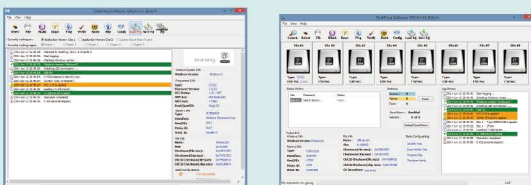
### ATE Port

With ISP adaptor, provide Busy/Pass/Error and Start pins for remote control.

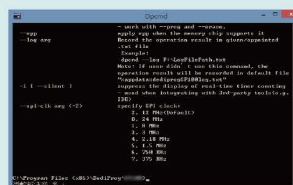
### Support 1.2V low voltage IC

Multiple programmers support to program IC in parallel

### Window GUI



### Command Line



### Multiple SF700



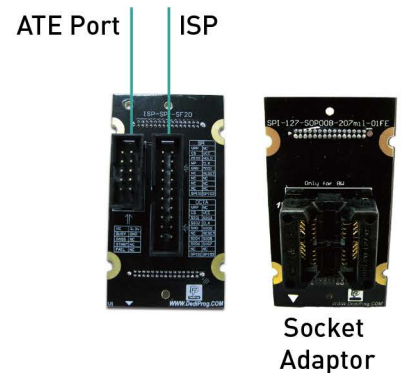
# Specification

## Hardware

Architecture	ARM and FPGA architecture
Internal Buffer	256MB
Protection Feature	Overcurrent and ESD protections
Vcc Range	1.2~3.6V
Vcc Current Limit	~200mA
Programming Interface	ISP Adaptor or IC Socket Adaptor
Support IC Category	SPI Octal, NOR Flash, SPI NOR Flash, and SPI NAND Flash
Operation Interface	Busy/Pass/Error LED, Start key
PC Connection Interface	The programmer provides a USB 2.0 interface. The ATE interface is provided by the ISP adaptor.

## Software

Operating Software	Dediware
Operating System	Windows XP/Vista/7/8/8.1/10
Support File Format	Binary, Intel Hex, Motorola, and ROM, etc.
Programming Mode	Engineering Mode and Production Mode
Engineering Mode	<ol style="list-style-type: none"><li>1. IC selection and image file loading</li><li>2. IC Erase, Blank check, Program, and Verify</li><li>3. IC configuration and batch setting</li><li>4. Serial number or unique key programming setting</li><li>5. Project file operation</li></ol>
Production Mode	<ol style="list-style-type: none"><li>1. Count all PASS/ERROR amount</li><li>2. Output project execution report automatically</li></ol>



## Special Features

1. Batch mode configuration
2. Programming area configuration
3. Engineering mode tool
4. Status Register configuration
5. Automatically unprotected option
6. VCC/CLK/IO mode configuration

## Power

USB 5V or DC 5V

## Dimension (W x D x H)

108 x 67 x 20 mm

## Weight

70g

## Standard Package

1. SF700 IC Programmer x 1
2. USB Cable x 1
3. AC 100~240V to DC 5V/1A Power Adaptor x 1
4. ISP-SPI-SF20 ISP Adaptor with ISP cable x 1
5. ISP-SPI-SF14 ISP Adaptor with ISP cable x 1
6. ISP split cable for SPI Octal, NOR Flash x 1
7. CD-ROM (Include software and user manual) x 1



Dediprogram Technology Co., Ltd.

### Taiwan Headquarter

4F, No. 7, Lane 143, Xinming Rd.,  
Neihu District, Taipei, Taiwan, R.O.C. 114  
T/ 886-2-2790-7932  
E/ sales@dediprogram.com

### China Office

Room 518, Building 66, Lane 1333,  
Xinlong Road, Vanke Hongqiao CBD.  
Min Hang District, Shanghai, P.R.C. 201101  
T/ 86-21-5160-0157  
E/ sales@dediprogram.com

### U.S. Office

209 E Baseline RD, Suite E208 #8,  
Tempe, AZ, 85283, U.S.A.  
T/ 1-909-274-8860  
E/ america@dediprogram.com