

SF600/SF600Plus Serial Flash Programmer

In-Circuit & Off-line Programming Solutions

SF600/SF600Plus

is a high speed Serial Flash programmers with In Circuit Programming (update the SPI Flash soldered on board) and Off-line programming (update the SPI Flash in the socket adaptor) functions. The programmer is easily controlled with the computer. DediProg software offers friendly interfaces and powerful features to our users.

SF600Plus is an upgrade version of SF600. The main difference is that SF600Plus embeds a 8GB memory, which allows Stand-Alone Programming.

Features

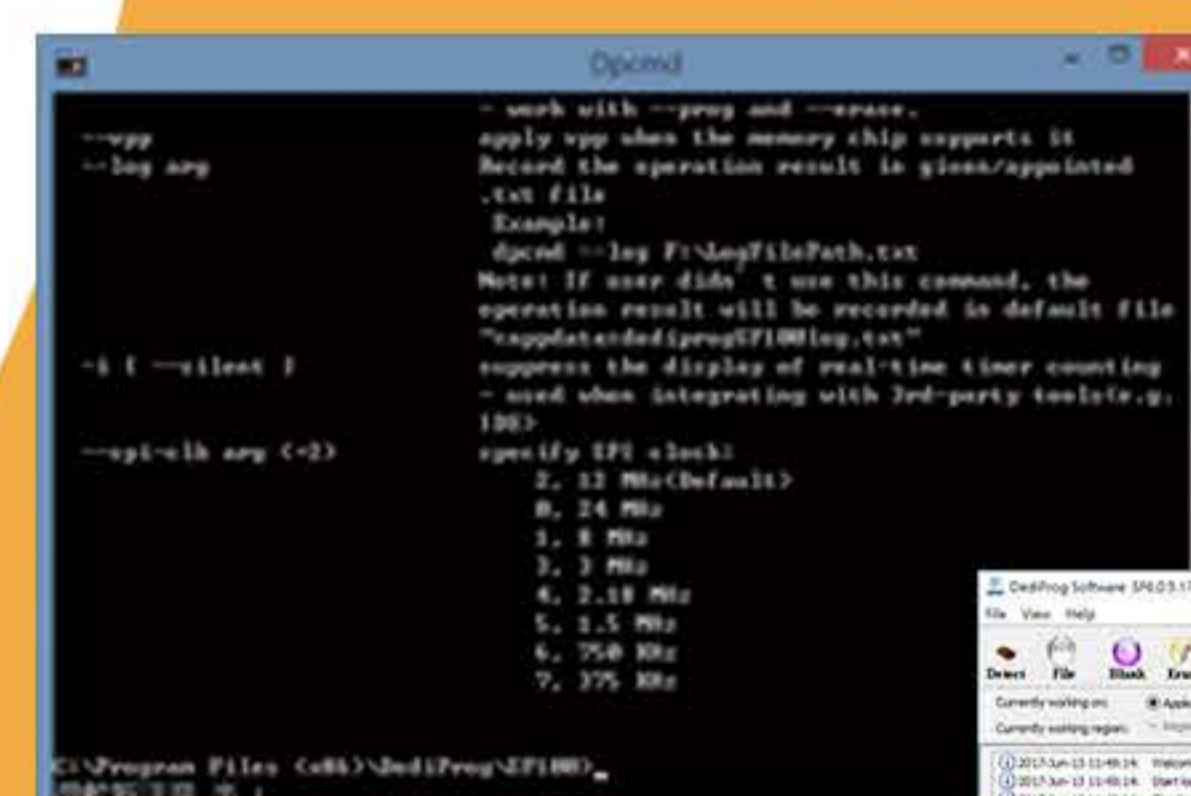
- High speed USB and high SPI performance, supports up to 2Gb SPI Flash.
- In-Circuit & Off-line programming.
- Start button feature: Able to Batch.
- Stand-Alone Mode (SF600Plus Only): Support Start button programming and IO Port programming.
- Program two Serial Flash memories.
- Signal conflict protections.
- Multi-Programmability Capability through USB.
- Support 1.8V low voltage IC.
- Support Windows 2003 and above.
- Support both 32 and 64bit OS.
- Support 1 CS pin.



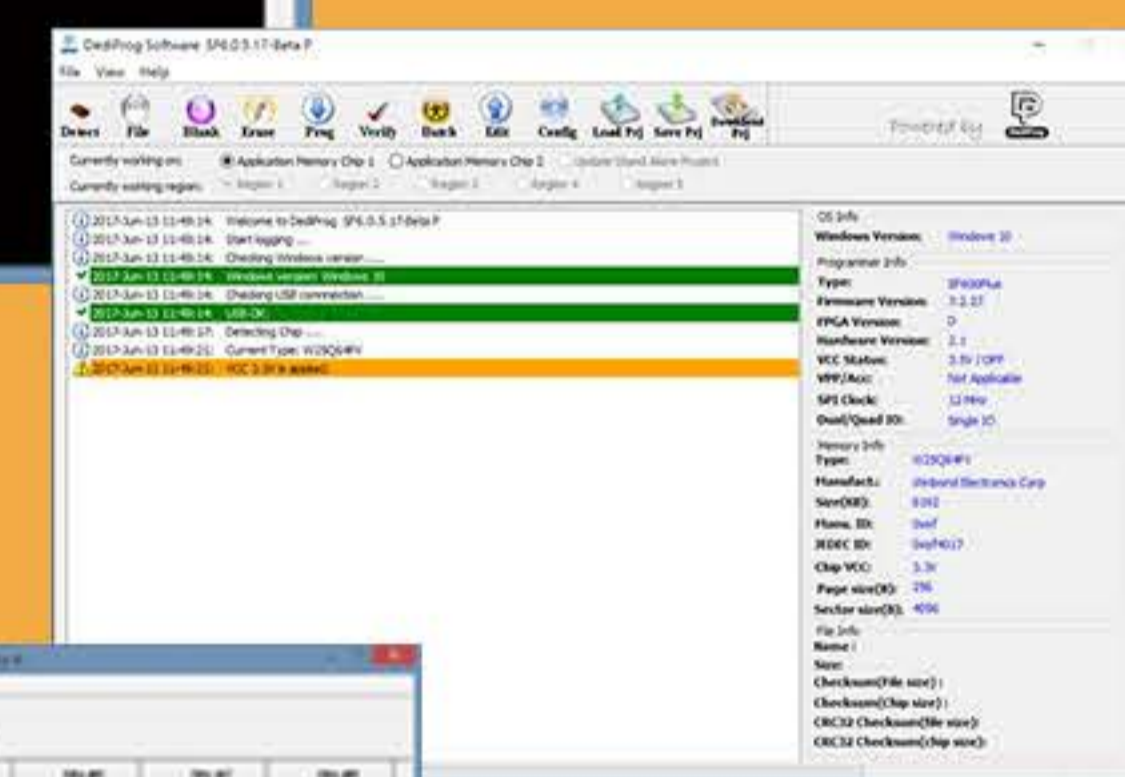
Multi-Programmability Capability



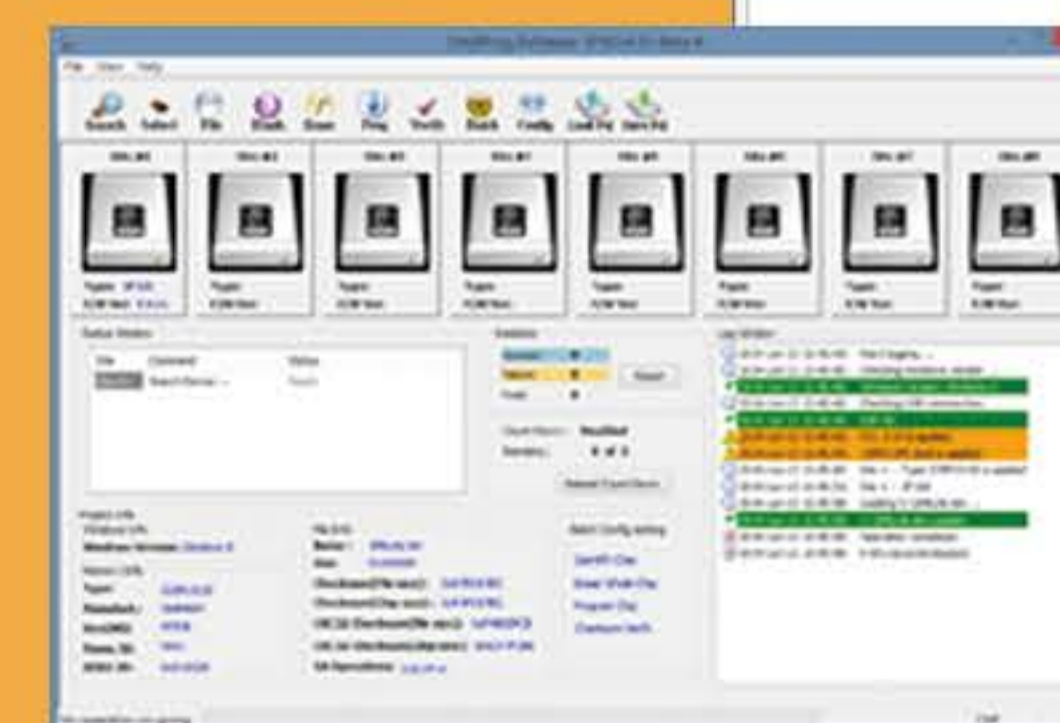
DediProg Software provides friendly user interfaces.



Command Line



Engineering



Production

High Performance

USB Mode	Memory size						
Reference IC	W25X80VSSIG	W25Q16VSSIG	W25Q32VSSIG	W25Q64FVSSIG	W25Q128BVFIG	W25Q256FVFIG	S25FL512SAGMF1011
Density	8Mb	16Mb	32Mb	64Mb	128Mb	256Mb	512Mb
Program + Verify	9s	11.6s	12.6s	31s	61.7s	89.2s	147.4s

*Please note the programming and verify time will depends on different IC type; please refer to the IC specification before programming



**DediProg
Technology**

www.dediprogram.com
sales@dediprogram.com

Taipei Headquarter

TEL: + 886 - 2 - 2790 - 7932

FAX: + 886 - 2 - 2790 - 7916

4F, No. 7, Lane 143, Xinming Rd., Neihu District, Taipei, Taiwan, R.O.C 114

Shanghai Office

TEL: +86 - 21 - 5160 - 0157

Room 518., Building 66, Lane 1333, Xinlong Road, Vanke Hongqiao CBD. Min Hang District, Shanghai, P.R.C. 201101

U.S. Office

TEL: + 1 - 909-274-8860

209 E Baseline RD, Suite E208 #8, Tempe, AZ, 85283, USA

SF600/SF600Plus

Serial Flash Programmer

Specification

Hardware

Architecture
Programming Interface
IC Adaptor
Communication Interface
Embedded memory
Operation Interface
Hardware Protection
Vcc
Current limitation on Vcc
Vpp
Current limitation on Vpp

ARM and FPGA architecture with high density SDRAM.
ICP(ISP)/Off-line(Socket adaptor)
DIP, SOP, SSOP, TSOP, PLCC, QFN, LQFP, BGA...etc.
High speed USB 2.0
8GB memory (SF600Plus only)
Busy/Pass/Error LED, start button, power LED, and IO Port.
Overcurrent and ESD protections.
1.6~5V
~300mA
1.6~12V
~100mA

Supported IC

SPI NOR Flash

Software

Operation Software
OS Supporting
File Typed Supported
Programming Function
Extra Function

DediProg Engineering/DediProg Production/DpCmd
Windows XP/Windows Vista/Windows 7/Windows 8/Windows 8.1/Windows 10
Binary, Hex, Motorola, and ROM.
Blank Check, Erase, Program, Verify, Engineering mode, and status register modify.
Multiple SF600 or SF600Plus Capability

Power

USB 5V or DC 5V/1A

Dimension

W135mm*D75mm*H17mm

Weight

105g (without socket adaptor)

Standard Accessories

1. SF600 or SF600Plus main unit *1
2. USB Cable *1
3. ISP Cable
4. SF100 2.54mm 2*4 ISP Cable *1
5. SF600 Universal Adaptor*1
6. CD-ROM (Include DediProg Software and user manual)*1
7. AC Power Adaptor *1 (SF600Plus only)



Taipei Headquarter

TEL: +886-2-2790-7932

FAX: +886-2-2790-7916

4F, No. 7, Lane 143, Xinming Rd., Neihu District, Taipei, Taiwan, R.O.C 114

Shanghai Office

TEL: +86 - 21 - 5160 - 0157

Room 518, Building 66, Lane 1333, Xinlong Road, Vanke Hongqiao CBD, Min Hang District, Shanghai, P.R.C. 201101

U.S. Office

TEL: +1 909-274-8860

209 E Baseline RD, Suite E208 #8, Tempe, AZ, 85283, USA



DediProg
Technology