

USB driver Installation Guide (Win 8 / 8.1 / 10)

Version 1.0

DediProg Technology

4F, No. 7, Lane 143, Xinming Rd., Neihu District, Taipei, Taiwan, 114

©DediProg Technology Co., Ltd 2015 All right reserved.

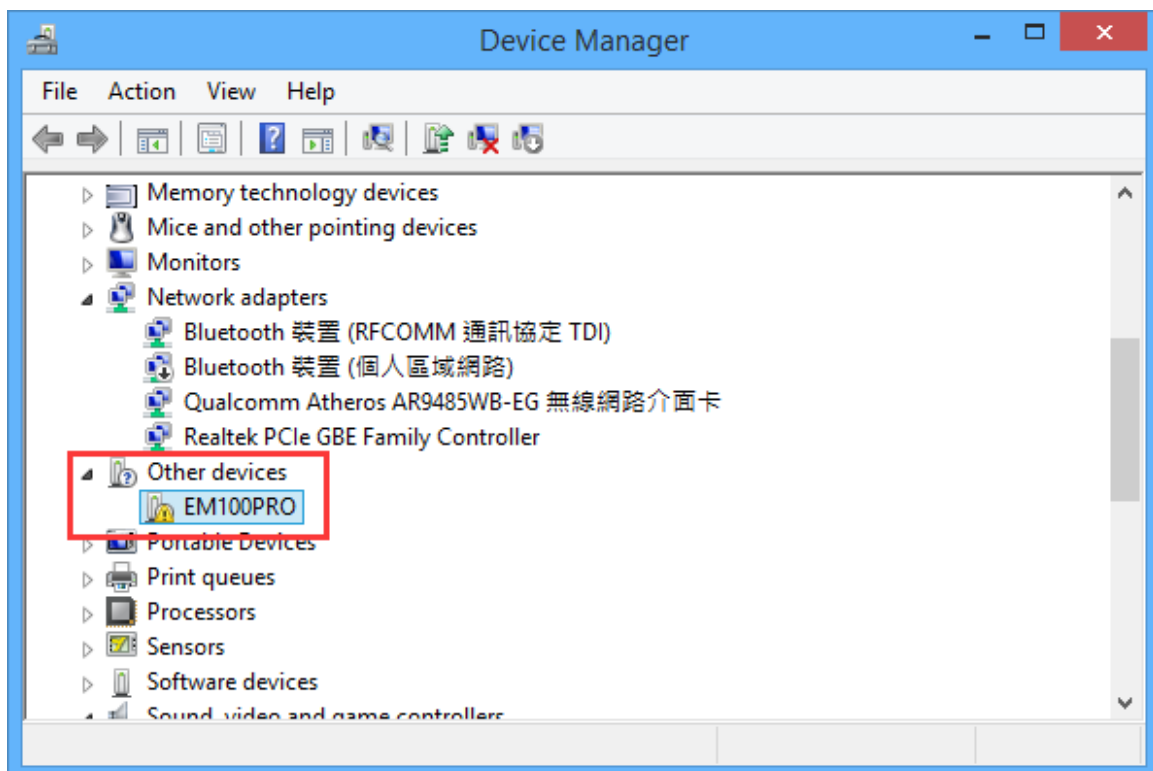


This guide can be used in EE100 / EM100Pro / SF100 / SF600 / SF600Plus / ProgMaster and StarProg Series.

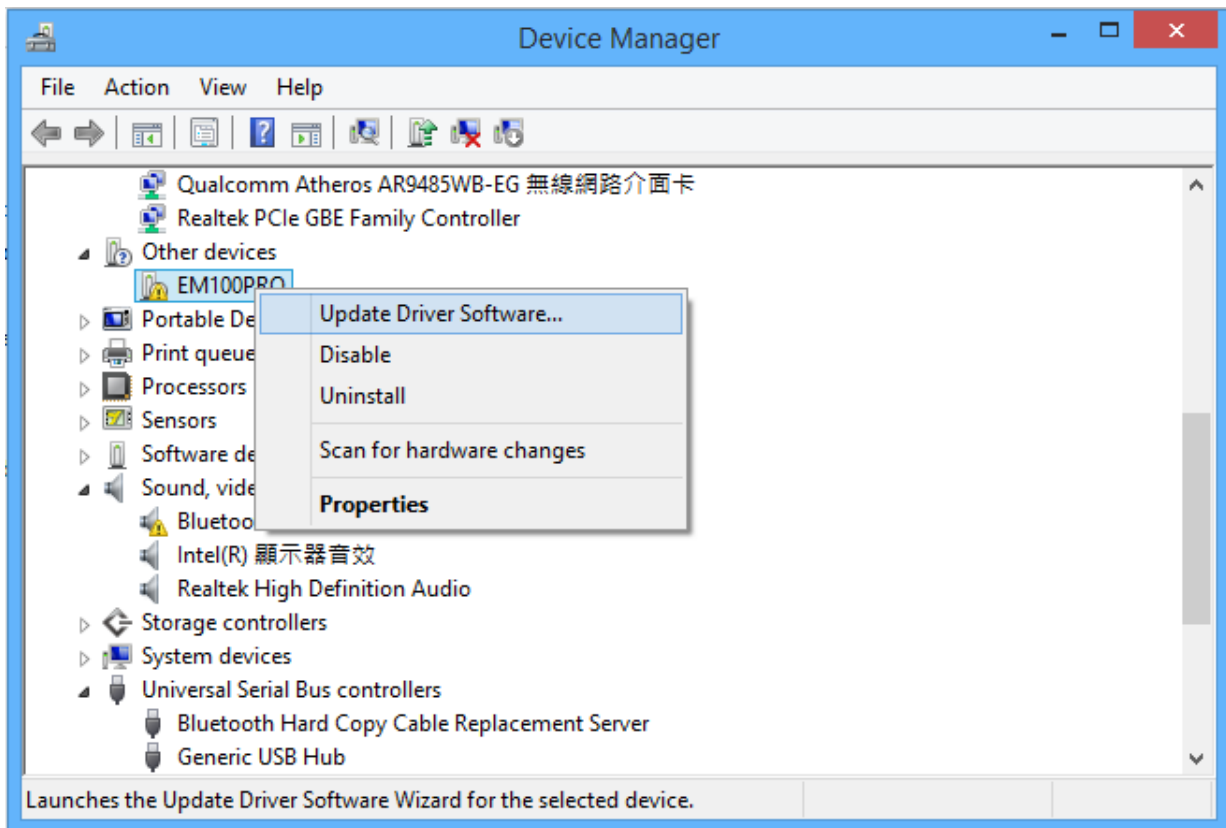
When the device is connected to a Windows 8.1 PC for the first time, Windows will report that it failed to find a USB driver if they have not been pre-installed.

Follow the steps below to manually install the USB driver using the Windows 8.1 Device Manager.

1. Connect your DediProg device to your computer's USB port.
2. Open Device Manager, and the device will be listed under **Other devices**.



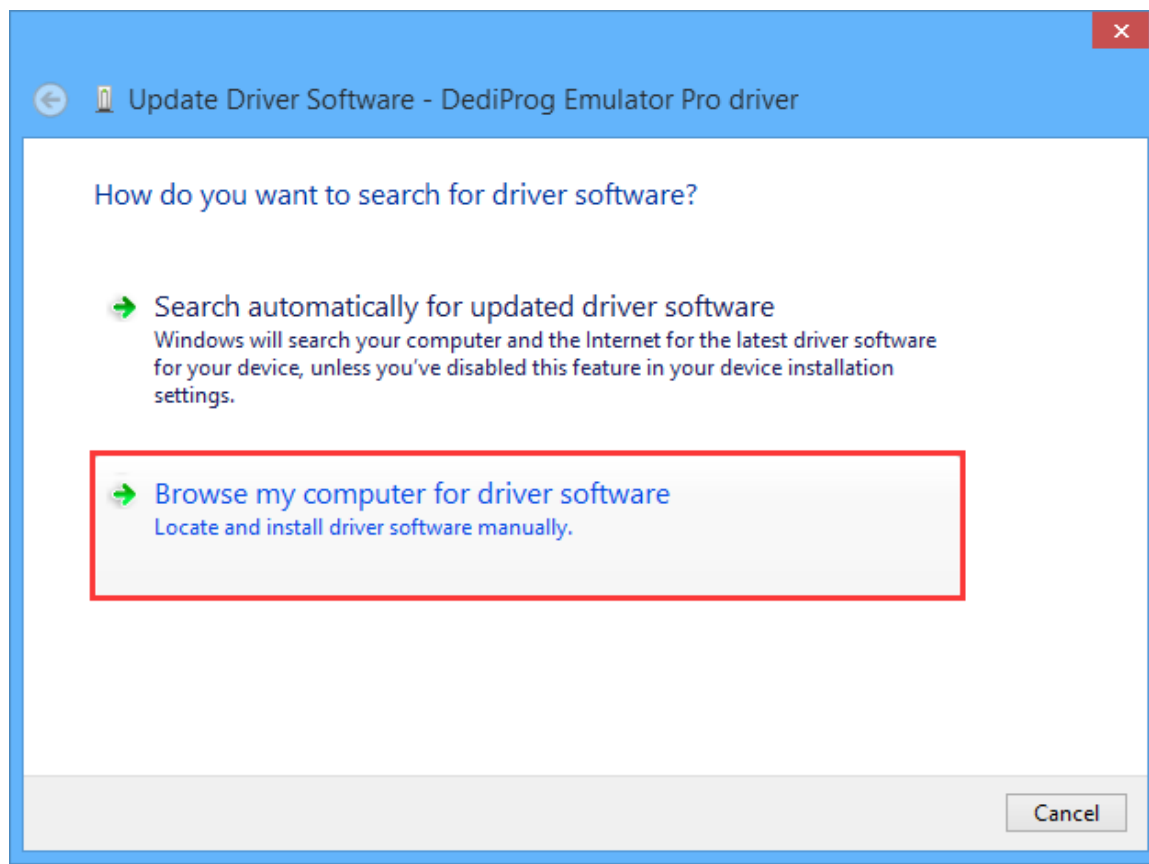
- Right-click on the device name* and select **Update Driver Software** from the pop-up menu. This will launch the Hardware Update Wizard.



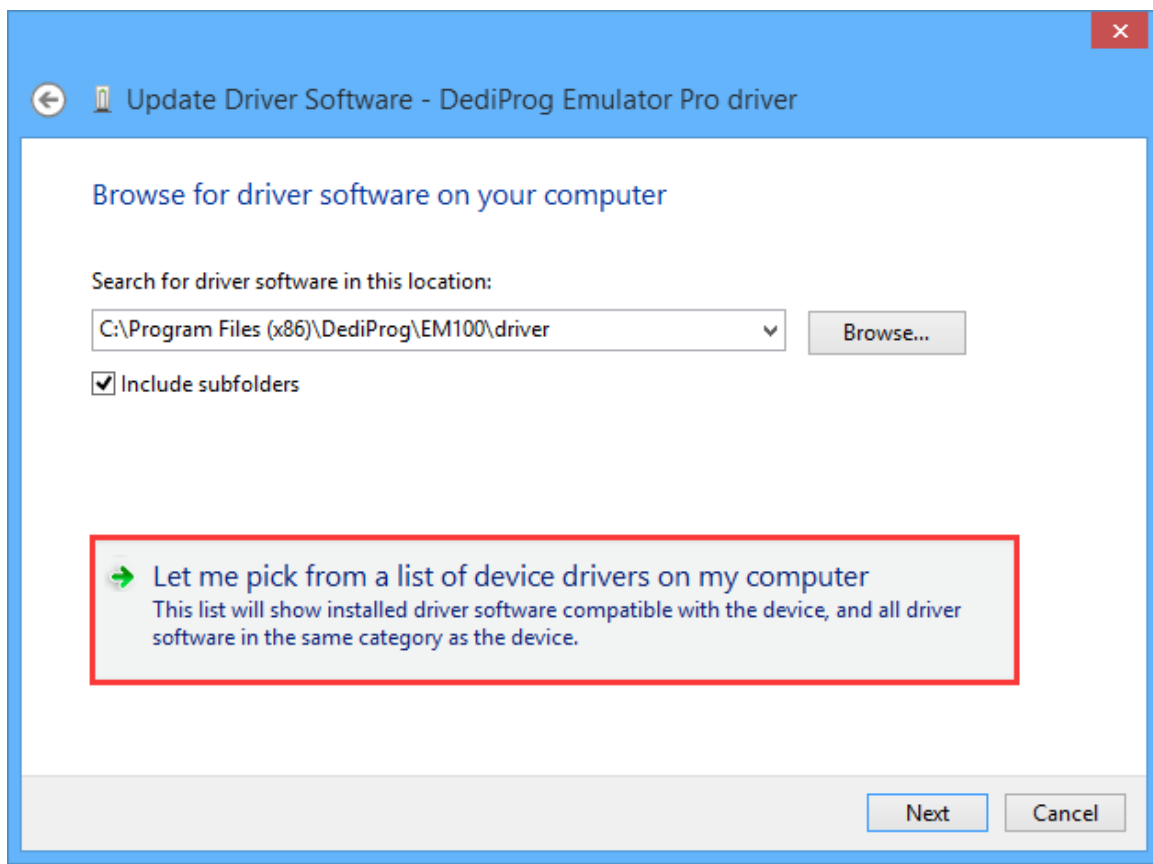
*The device name under the Other devices will be different depends on your device model name.

Device model name	Device name in the Device Manager
EM100Pro	EM100PRO
SF600/SF600Plus	SF600-ISP
SF100	SF100-ISP
EE100	DediProg EE100 Programmer
ProgMaster-F4/F8/U4/U8	ProgMasterV2
StarProg-F / U / ATE	ProgMasterV2

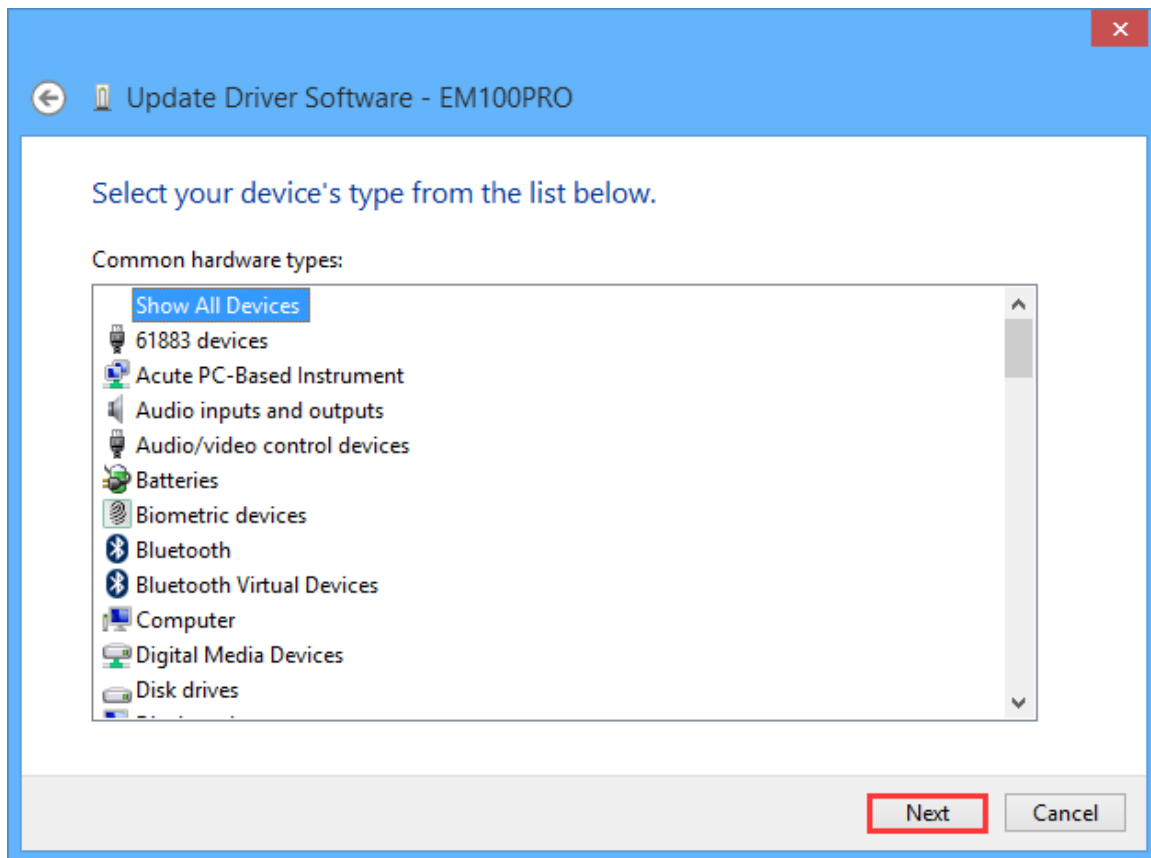
4. Click **Browse my computer for driver software** to continue.



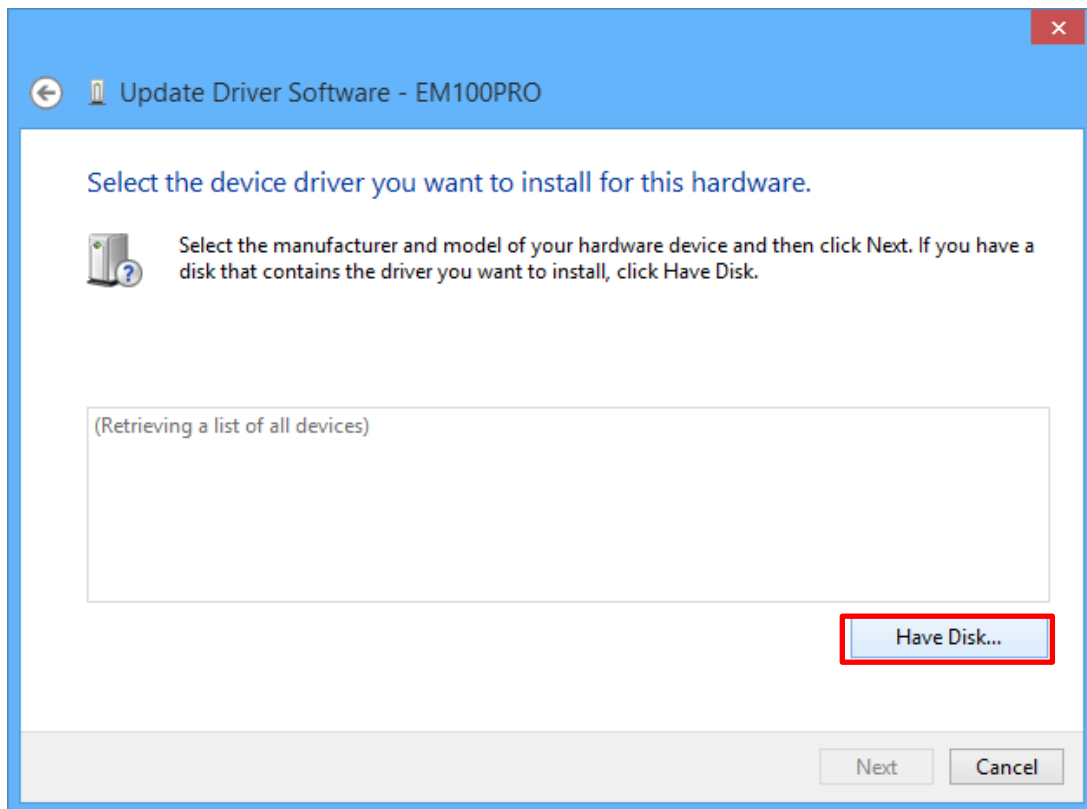
5. Select **Let me pick from a list of device drivers on my computer** and click **Next**.



6. Click **Next**.

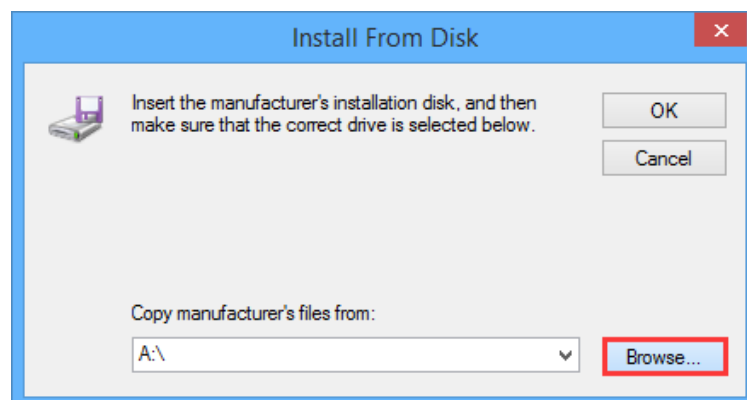


7. Click **Have Disk**

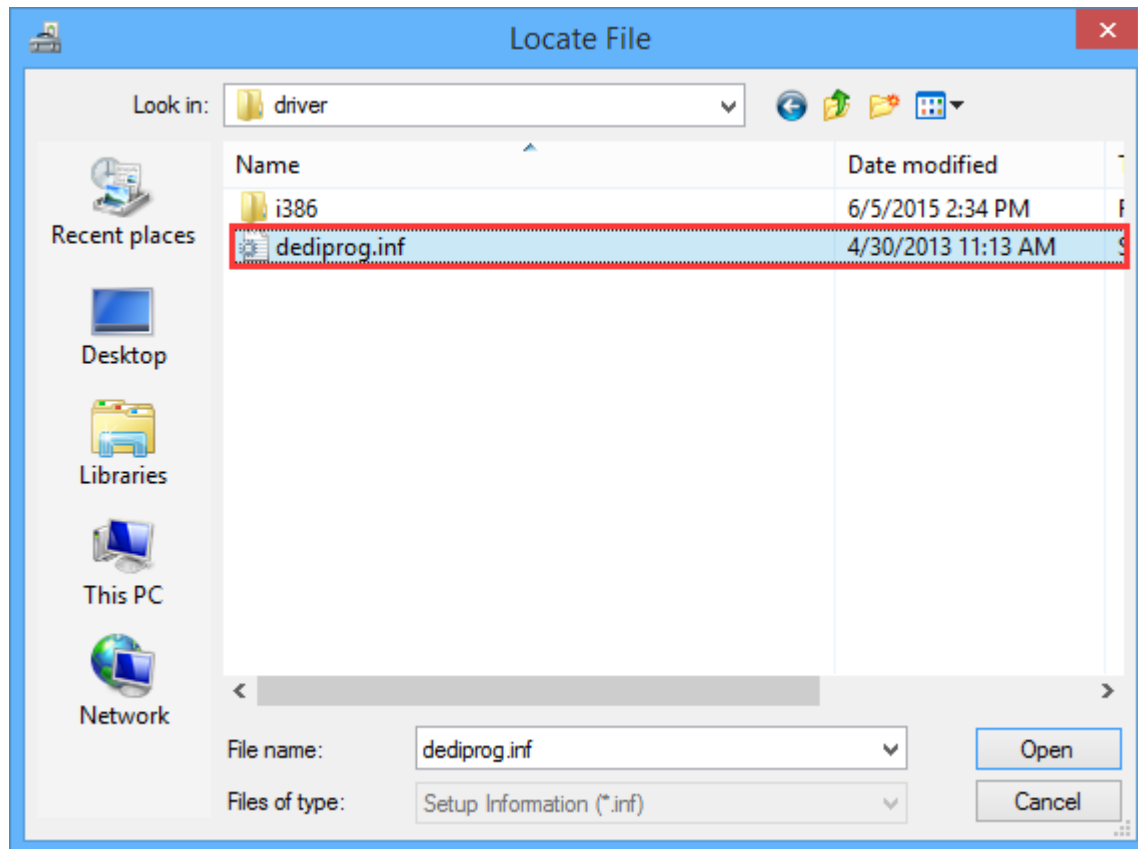


8. Click **Browse** and locate the USB driver folder.

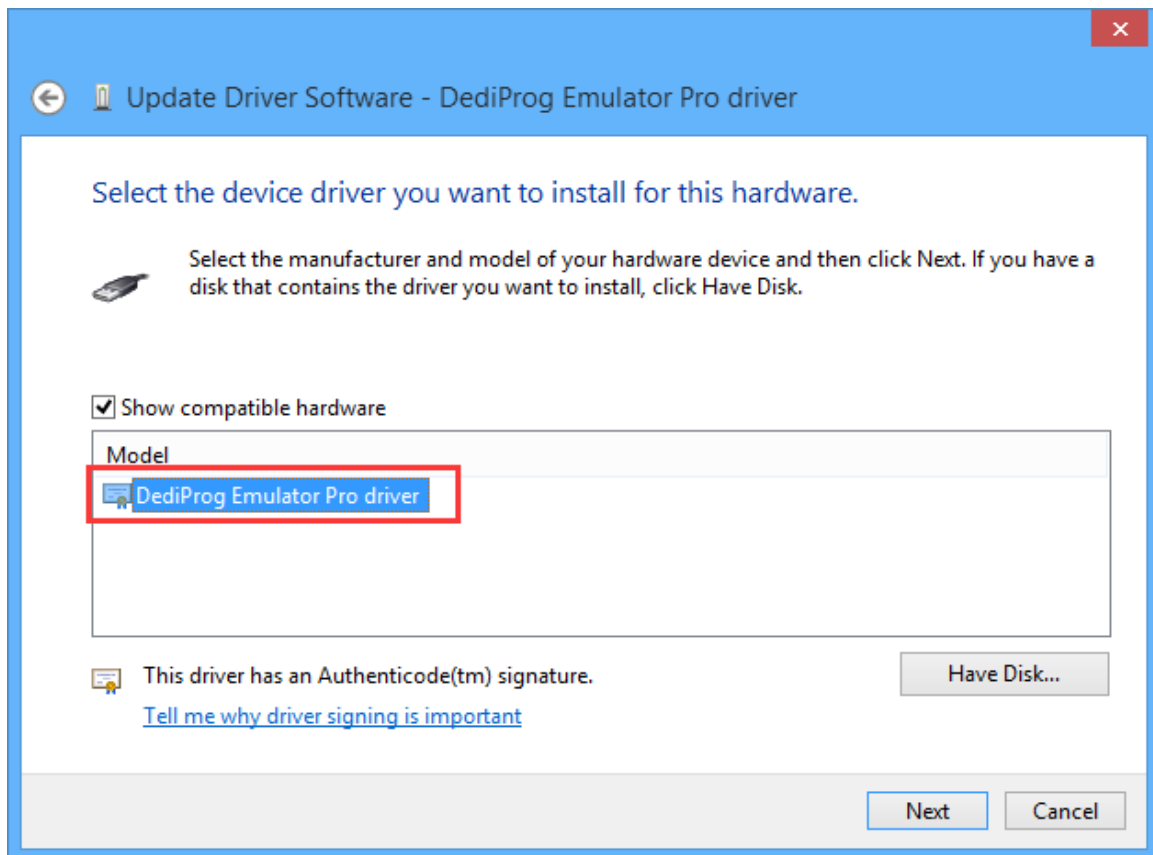
(The USB Driver is located in "C:\Program Files (x86)\DediProg\EM100\driver", driver name is "dediprog.inf".)



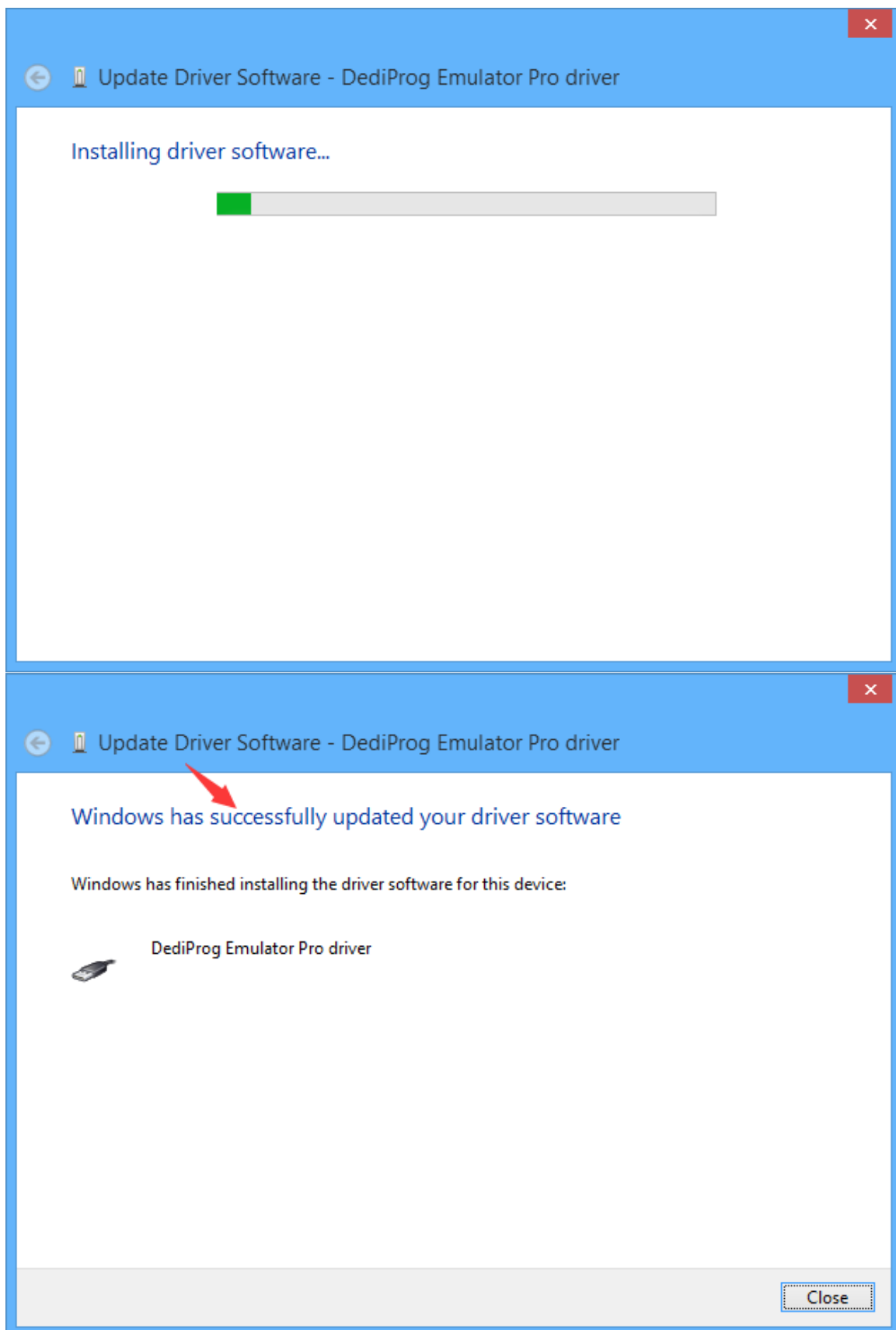
9. Select “dediprog.inf”



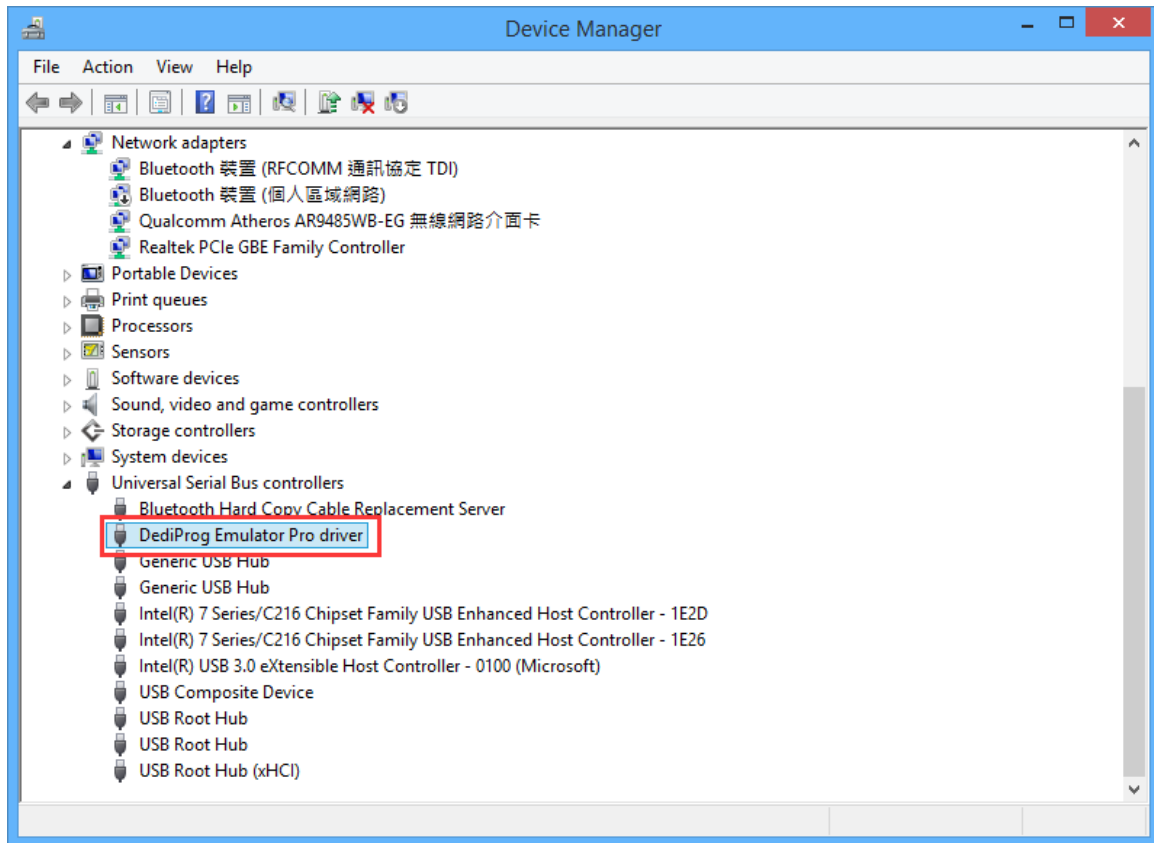
10. Select “**DediProg Emulator Pro driver**” from Model list and click **Next**.



11. Please wait until the installation is finished and close.



12. Check Device Manager and see the USB driver has successfully updated. It is now possible to connect to the DediProg device. The newly installed device will be listed under "Universal Serial Bus controllers" in the Device manager:



*Driver name and device model name

Device model name	Driver name listed the USB controllers
EM100Pro	DediProg Emulator Pro driver
SF600/SF600Plus	DediProg SF Programmer driver
SF100	DediProg SF Programmer driver
EE100	DediProg EE100 Programmer
ProgMaster-F4/F8/U4/U8	DediProg ProgMaster Gang Programmer
StarProg-F / U / ATE	DediProg ProgMaster Gang Programmer

Revision History

Date	Version	Changes
2015/06/15	1.0	Initial version release

DediProg Technology Co., Ltd

- **Taiwan Headquarter** TEL: 886-2-2790-7932 FAX: 886-2-2790-7916
4F., No.7, Ln. 143, Xinming Rd., Neihu Dist., Taipei City 114, Taiwan
- **Shanghai Office** TEL: 86-21-5160-0157 FAX: 86-21-6126-3530
Room 503, Block E, No.1618, Yishan Road, Shanghai, China

Technical Support : support@dediprogram.com

Sales Support : sales@dediprogram.com

www.dediprogram.com

Information is believed to be accurate and reliable. However, DediProg assumes no responsibility for the consequences of use of such information or for any infringement of patents or other rights of third parties which may result from its use. Specifications mentioned in this publication are subject to change without notice.

This publication supersedes and replaces all information previously supplied.

All rights reserved
Printed in Taiwan.